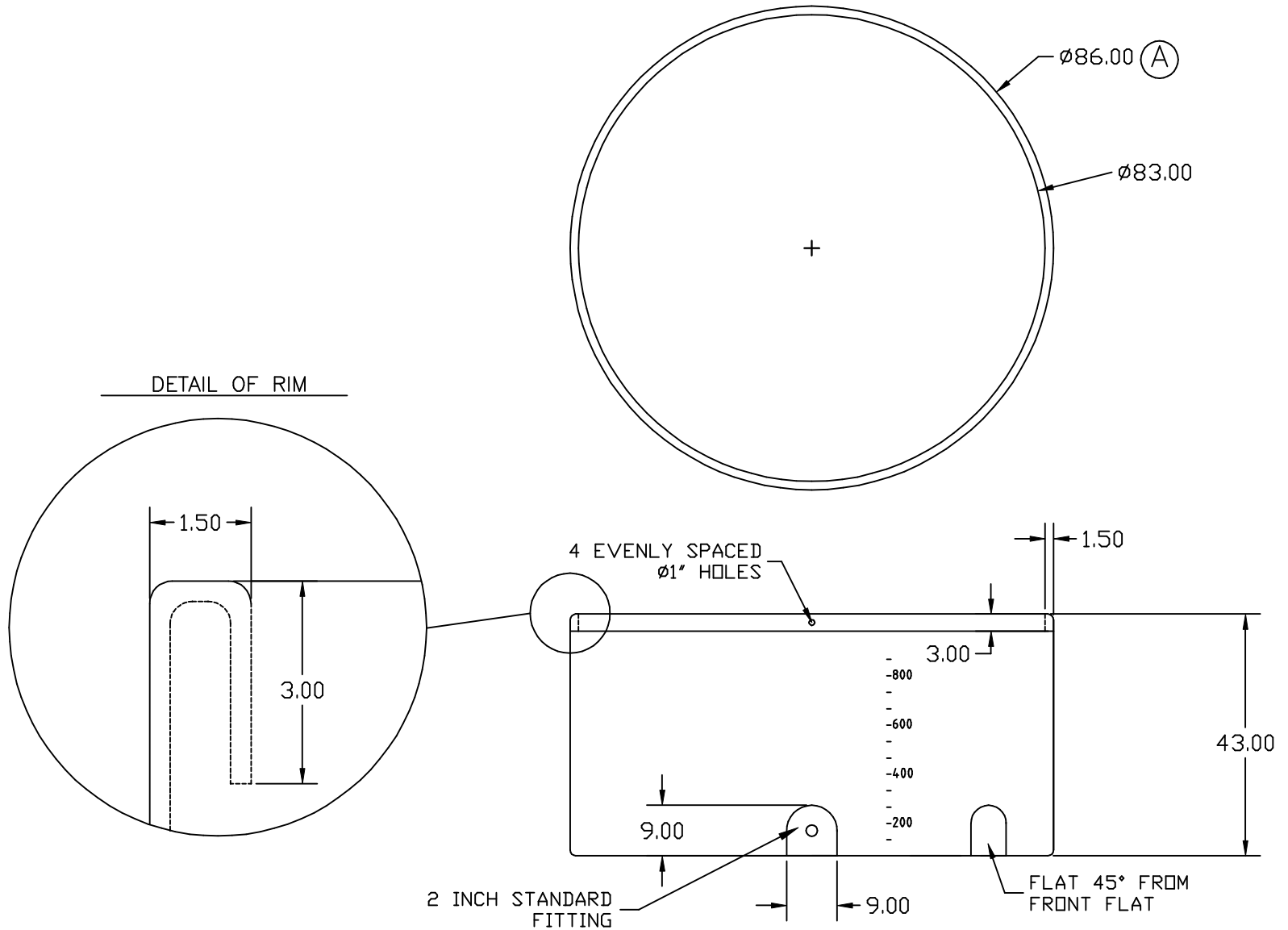

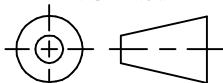


← GO BACK

TOP900GAL-PE-86DIA



|  |                                   |         |       |   |  |   |  |  |  |
|--|-----------------------------------|---------|-------|---|--|---|--|--|--|
|  |                                   |         |       | DRAWN / DATE<br>NVE 6/13/05   |  | MATERIAL  |  | <br><b>ChemIndustrial Systems, Inc.</b><br>PO Box 500, Cedarburg, WI 53012<br>262-375-8570 • (Fax) 262-375-8559 • info@chemindustrial.com |  |
|  |                                   |         |       | APPRD. / DATE<br>DHJ 6/22/05  |  | HDPE OR EQUIVALENT<br>REFERENCE MATERIAL DATA SHEET<br>FOR SPECIFIC PROPERTIES. |  |  |  |
| A  | DIAMETER WAS 85, PN WAS OP0900-85 | 7/31/06 | NVE   |   |  |   |  |  |  |
| REV  | DESCRIPTION                       | DATE    | APPRD |   |  |   |  |  |  |
| ALL DIMENSIONS ARE IN DECIMAL INCHES<br>TOLERANCES UNLESS OTHERWISE SPECIFIED<br>$\pm 1\% \text{ @ } 68^\circ \text{ F}$ |                                   |         |       | THIRD ANGLE PROJECTION<br>ANSI 14.5M<br> |  | NOTES:<br>1. .190 WALL THICKNESS AT FITTING<br>2. SHOT WEIGHT 175 LBS.          |  | SCALE<br>N.S.  |  |
|  |                                   |         |       |   |  |   |  | PART NO.<br>TOP900GAL-PE-86DIA   |  |